

Premium Prosthetics DIGITAL Library FDA

For All KDG Implant Connections



TiLobe®
Connection



Internal Hex
Connection

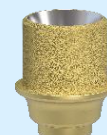


Conical
Connection

Keystone - Conical - Angled Base FDA

Conical 3.5/4.5/5.5 Eng- 1mm - 37.418

Conical 3.5/4.5/5.5 Non-Eng- 1mm - 36.418



Keystone - Conical - Ti-Abut Blank FDA

Conical 3.5/4.5/5.5

Ø10mm - 60.418

Ø14mm - 64.418

Keystone - Conical - Ti-Base FDA

Conical 3.5/4.5/5.5 Eng- 1mm - 16.418

Conical 3.5/4.5/5.5 Eng- 2mm - 16.418/2

Conical 3.5/4.5/5.5 Eng- 3mm - 16.418/3

Conical 3.5/4.5/5.5 Non-Eng- 1mm - 15.418/1

Conical 3.5/4.5/5.5 Non-Eng- 2mm - 15.418/2

Conical 3.5/4.5/5.5 Non-Eng- 3mm - 15.418/3



Keystone - Internal Hex - Angled base FDA

IntHex NP Eng - 1mm - 37.413

IntHex NP NonEng - 1mm - 36.413

IntHex SP Eng - 1mm - 37.414

IntHex SP NonEng - 1mm - 36.414

IntHex WP Eng - 1mm - 37.415

IntHex WP NonEng - 1mm - 36.415



Keystone - Internal Hex - Ti-Abut Blank FDA

NP - Ø10mm - 60.413

SP - Ø10mm - 60.414

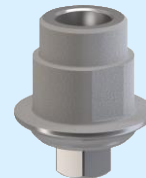
WP - Ø10mm - 60.415

WP - Ø14mm - 64.415



Keystone - Internal Hex - Ti-base FDA

IntHex NP Eng - 1mm - 16.413
IntHex SP Eng - 1mm - 16.414
IntHex WPØ5.7 Eng - 1mm - 16.415
IntHex WPØ7.0 Eng - 1mm - 16.416
IntHex WPØ8.0/9.0 Eng - 1mm - 16.417
IntHex NP Eng - 2mm - 16.413/2
IntHex SP Eng - 2mm - 16.414/2
IntHex WPØ5.7 Eng - 2mm - 16.415/2
IntHex WPØ7.0 Eng - 2mm - 16.416/2
IntHex WPØ8.0/9.0 Eng - 2mm - 16.417/2
IntHex NP Eng - 3mm - 16.413/3
IntHex SP Eng - 3mm - 16.414/3
IntHex WPØ5.7 Eng - 3mm - 16.415/3
IntHex WPØ7.0 Eng - 3mm - 16.416/3
IntHex WPØ8.0/9.0 Eng - 3mm - 16.417/3
IntHex NP NonEng - 1mm - 15.413
IntHex SP NonEng - 1mm - 15.414
IntHex WPØ5.7 NonEng - 1mm - 15.415
IntHex WPØ7.0 NonEng - 1mm - 15.416
IntHex WPØ8.0/9.0 NonEng - 1mm - 15.417
IntHex NP NonEng - 2mm - 15.413/2
IntHex SP NonEng - 2mm - 15.414/2
IntHex WPØ5.7 NonEng - 2mm - 15.415/2
IntHex WPØ7.0 NonEng - 2mm - 15.416/2
IntHex WPØ8.0/9.0 NonEng - 2mm - 15.417/2
IntHex NP NonEng - 3mm - 15.413/3
IntHex SP NonEng - 3mm - 15.414/3
IntHex WPØ5.7 NonEng - 3mm - 15.415/3
IntHex WPØ7.0 NonEng - 3mm - 15.416/3
IntHex WPØ8.0/9.0 NonEng - 3mm - 15.417/3



Keystone - MOLARIS™ TiLobe® - Ti-Abut Blank FDA

Ø7.0 - Ø14mm - 60.411
Ø8.0/9.0 - Ø14mm - 60.411



Keystone - MOLARIS™ TiLobe® - Ti-Base FDA

Ø7.0 Eng - 1mm - 16.411
Ø8.0/9.0 Eng - 1mm - 16.412
Ø7.0 Eng - 2mm - 16.411/2
Ø8.0/9.0 Eng - 2mm - 16.412/2
Ø7.0 Eng - 3mm - 16.411/3
Ø8.0/9.0 Eng - 3mm - 16.412/3
Ø7.0 NonEng - 1mm - 15.411
Ø8.0/9.0 NonEng - 1mm - 15.412
Ø7.0 NonEng - 2mm - 15.411/2
Ø8.0/9.0 NonEng - 2mm - 15.412/2
Ø7.0 NonEng - 3mm - 15.411/3
Ø8.0/9.0 NonEng - 3mm - 15.412/3



Keystone - MUA Abutment FDA

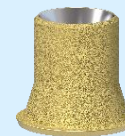
Ti-Base

Multi Unit RP - 15.453
Multi Unit WP - 15.454



Angled Base

Multi Unit RP - 36.007
Multi Unit WP - 36.054

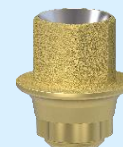


Direct To MUA

Multi Unit RP
Multi Unit WP

Keystone - TiLobe® - Angled base FDA

TiLobe® SD Eng - 1mm - 37.408
TiLobe® SD NonEng - 1mm - 36.408
TiLobe® RD Eng - 1mm - 37.409
TiLobe® RD NonEng - 1mm - 36.409
TiLobe® WD Eng - 1mm - 37.410
TiLobe® WD NonEng - 1mm - 36.410



Keystone - TiLobe® - Ti-Abut Blank FDA

TiLobe® SD Ø10mm - 60.408

TiLobe® RD Ø10mm - 60.409

TiLobe® WD Ø10mm - 60.410

TiLobe® WD Ø14mm - 64.410



Keystone - TiLobe® - Ti-base FDA

TiLobe® SD Eng - 1mm - 16.408

TiLobe® RD Eng - 1mm - 16.409

TiLobe® WD Eng - 1mm - 16.410

TiLobe® SD Eng - 2mm - 16.408/2

TiLobe® RD Eng - 2mm - 16.409/2

TiLobe® WD Eng - 2mm - 16.410/2

TiLobe® SD Eng - 3mm - 16.408/3

TiLobe® RD Eng - 3mm - 16.409/3

TiLobe® WD Eng - 3mm - 16.410/3

TiLobe® SD NonEng - 1mm - 15.408

TiLobe® RD NonEng - 1mm - 15.409

TiLobe® WD NonEng - 1mm - 15.410

TiLobe® SD NonEng - 2mm - 15.408/2

TiLobe® RD NonEng - 2mm - 15.409/2

TiLobe® WD NonEng - 2mm - 15.410/2

TiLobe® SD NonEng - 3mm - 15.408/3

TiLobe® RD NonEng - 3mm - 15.409/3

TiLobe® WD NonEng - 3mm - 15.410/3



Scan Body



CC



GENESIS
Active

GA71605



NP



SP



WP



Internal Hex
Connection

SD



RD



WD



TiLobe®
Connection

MUA RP



MUA WP



Multi-Unit

DIM Analogs

- 14.107 MUA, Analog, RP
- 14.147 MUA Analog, WP
- 14.408 TL, Analog DIM with Screw, Ø3.5/3.8
- 14.409 TL, Analog DIM with Screw, Ø4.1/4.5
- 14.411 TL, Analog DIM with Screw, Ø7.0
- 14.412 TL, Analog DIM with Screw, Ø8.0/9.0
- 14.413 IH, Analog DIM with Screw, NP
- 14.414 IH, Analog DIM with Screw, SP
- 14.415 IH, Analog DIM with Screw, WP
- 14.416 IH Analog DIM with Screw, WP, Ø6.0 flare
- 14.417 IH Analog DIM with Screw, WP, Ø7.0 flare
- 14.418 Conical, Analog DIM with Screw, PCA

